



PRODUCT UPDATE

MTS TestSuite™ TW Software Release 4.3 – August 2017

- Product: MTS TestSuite Software version 4.3 – August 2017 has been released. This Product Update document describes the new features, enhancements, and resolved issues in this version of software.
- Action: All new installations of MTS TestSuite Software should use the 4.3 release. Upgrading from older versions to the 4.3 – August 2017 release is recommended, subject to eligibility.
- Date: August 31, 2017
- Version: Version 4.3 August 2017
- Reference Number: UPDT_2017-001TW
- Technical Contact: For technical support, please contact tech.support@mts.com
- Eligibility: Customers with current ME&S subscriptions are eligible to install this upgrade on covered systems.

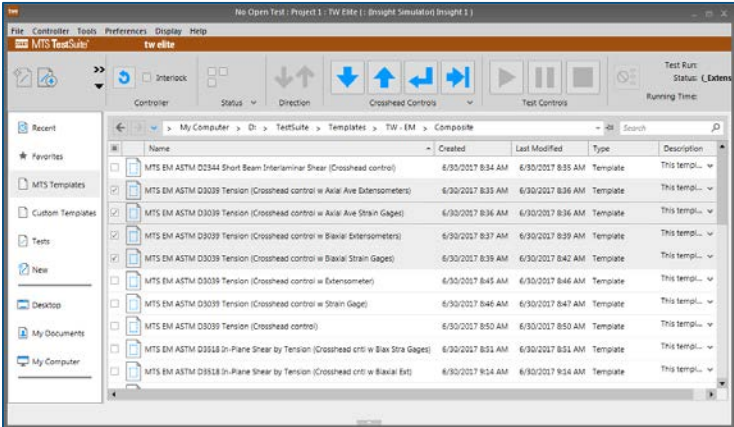
The purpose of this Product Update is to inform MTS customers of new or updated product availability. Please review the information in this document to determine if any of your MTS systems may be affected. For additional information or technical assistance, please contact your local MTS representative <http://www.mts.com/en/about/global/index.htm>.

New Features & Enhancements TestSuite TW 4.3

Composite Templates

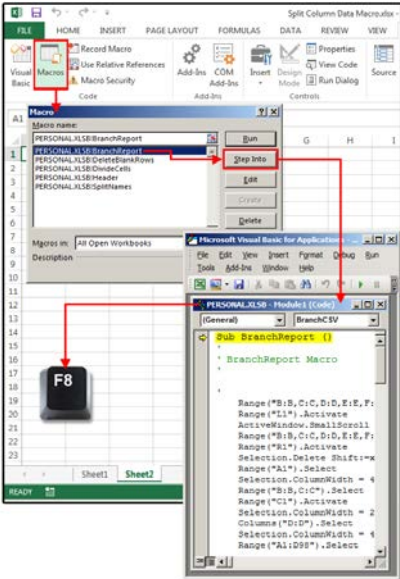
A new series of optional test templates are available to support the testing of composite specimens. These templates may be added individually or all together as a bundle. Individual templates have been added to support the following standards on both electro-mechanical and servo-hydraulic systems:

- ISO 527-4
- ISO 527-5
- ISO 14125
- ISO 14126
- ISO 14129
- ISO 14130
- ASTM D3039
- ASTM D6641
- ASTM D2344
- ASTM D3518



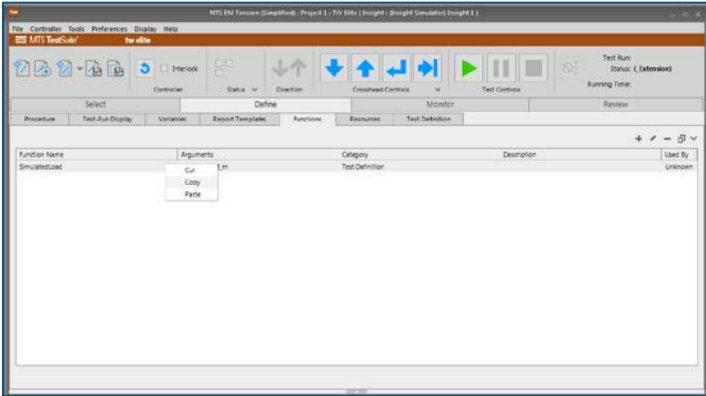
Excel Macro Support in Templates

TestSuite templates that include Excel macros are now supported within TestSuite TW. Users can now leverage the power of macros to further enhance their self-modified test templates!



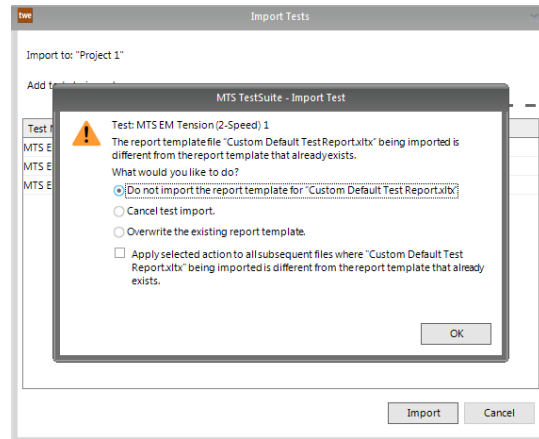
Support for Copy and Pasting Functions Between Tests

To make it easier to move functions from one test to another, we have added a menu accessible via a right-click within the Functions tab that allows the user to Cut, Copy and Paste functions.



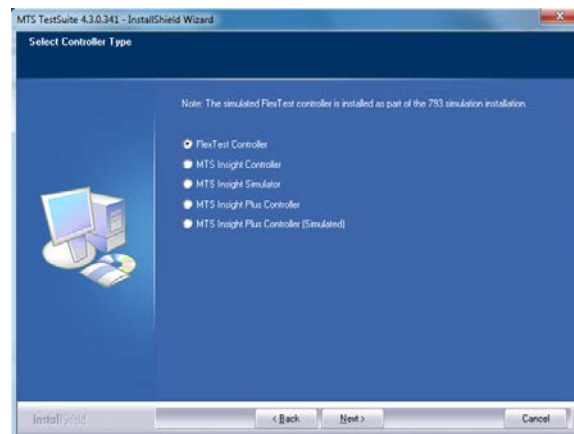
Improved Importing of Multiple Tests

TestSuite TW now provides an option that allows you to apply the selection to other tests, eliminating the need to do this for every test selected.



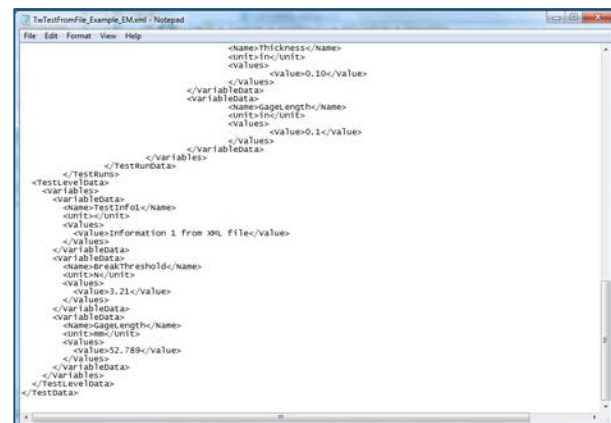
TestSuite Remembers Controller Setting

In the past when users installed a new version of TestSuite the install program would ask the user for which controller the software should be configured. If the user selected the wrong controller type, the software would no longer function until they used the SelectControllerTypeUtility to redefine the controller type. Now the installer remembers the previous setting and simply uses that for the new installation.



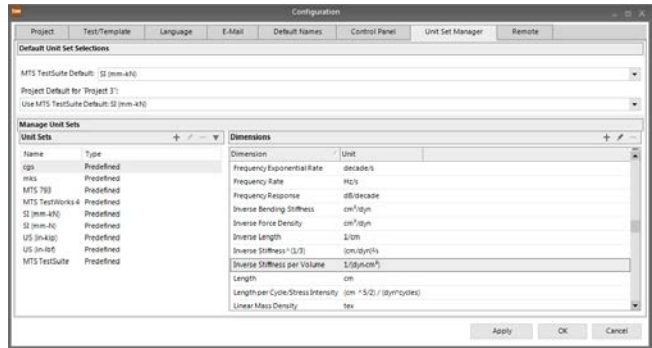
New Test from File Enhancements

TestSuite has improved its "New Test from File" function so that test-level variables can now be included and created from the external file.



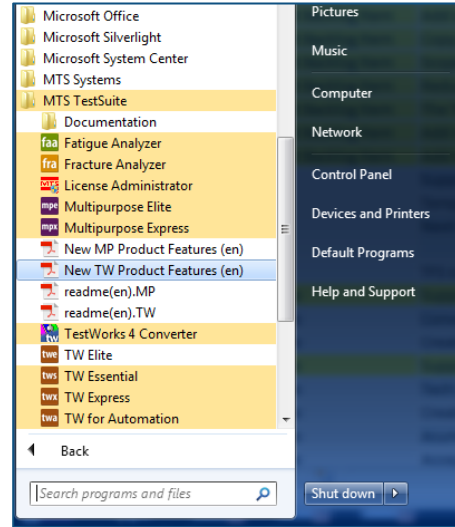
New Dimension

Inverse stiffness per volume has been added as a dimension to support moment of inertia calculations.



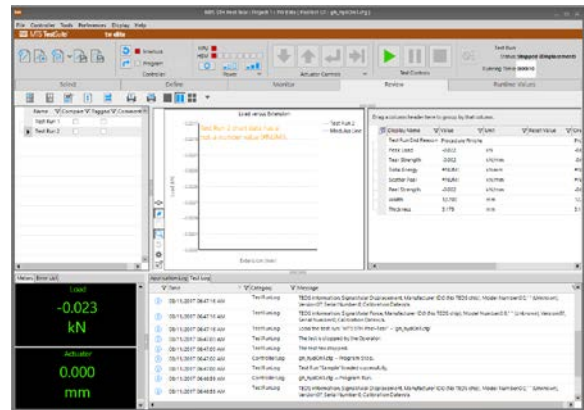
New Product Features Documents Available via Start Menu

The New Product Features documents are now available via the start menu making them more easily available to all users of the software.



TEDS Information Available in the Audit Trail

When using the Audit trail feature with our servo-hydraulic systems the data associated with TEDS-based transducers is now written to the log, providing a richer audit trail for laboratory activities. This information has previously only been available on our electro-mechanical systems.



MTS Systems Corporation
 14000 Technology Drive
 Eden Prairie, MN USA
 www.mts.com
 Tech Support: 800.328.2255
 Email: Tech.Support@mts.com

MTS is a registered trademark of MTS Systems Corporation within the United States. This trademark may be protected in other countries.