



PRODUCT UPDATE

MTS TestSuite™ MP Software Release 4.3 — August 2017

Product:	MTS TestSuite Software version 4.3 – August 2017 has been released. This Product Update document describes the new features, enhancements, and resolved issues in this version of software.
Action:	All new installations of MTS TestSuite Software should use the 4.3 release. Upgrading from older versions to the 4.3 – August 2017 release is recommended, subject to eligibility.
Date:	August 31, 2017
Version:	Version 4.3 August 2017
Reference Number:	UPDT_2017-001MP
Technical Contact:	For technical support, please contact tech.support@mts.com
Eligibility:	Customers with current ME&S subscriptions are eligible to install this upgrade on covered systems.

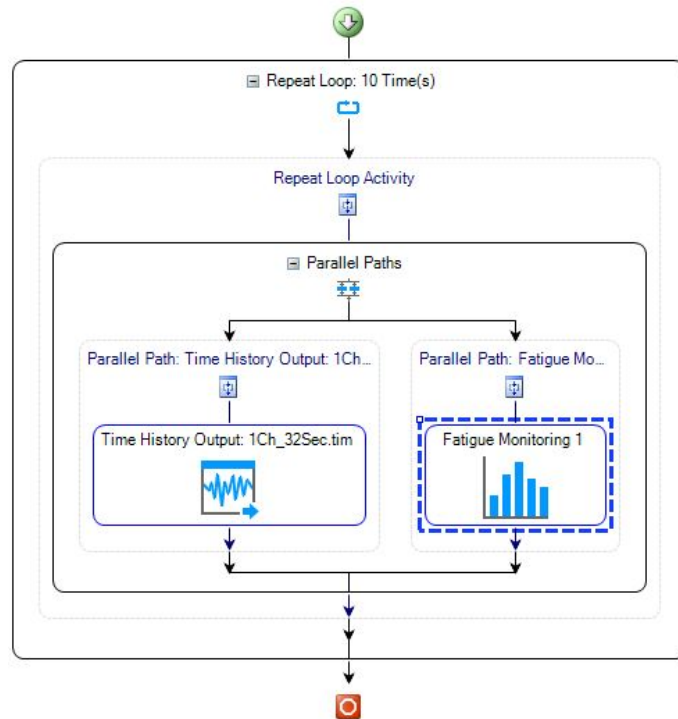
The purpose of this Product Update is to inform MTS customers of new or updated product availability. Please review the information in this document to determine if any of your MTS systems may be affected. For additional information or technical assistance, please contact your local MTS representative <http://www.mts.com/en/about/global/index.htm>.

New Features & Enhancements

TestSuite MP 4.3

Fatigue Monitoring

A new optional monitoring method called Fatigue Monitoring is now available. Fatigue Monitoring enables TestSuite to do fatigue damage calculations on data acquisition channels of interest in tests where profiles are played out repetitively. The feature provides users with a visual representation of the fatigue damage for each repeat of the profile and limits may be set on the amount of damage. As the specimen degrades the user can be warned and the test may be stopped or put into hold as desired.



Multi-Box Controller Support

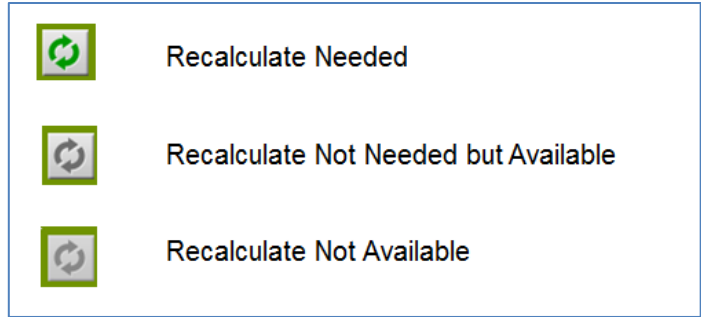
TestSuite version 4.3 includes support for "Multi-Box" configurations (multiple controller chassis connected together to create a single higher channel count controller.) This allows TestSuite to be leveraged on even more test systems.



Enhanced Recalculate All Button in Analyzers

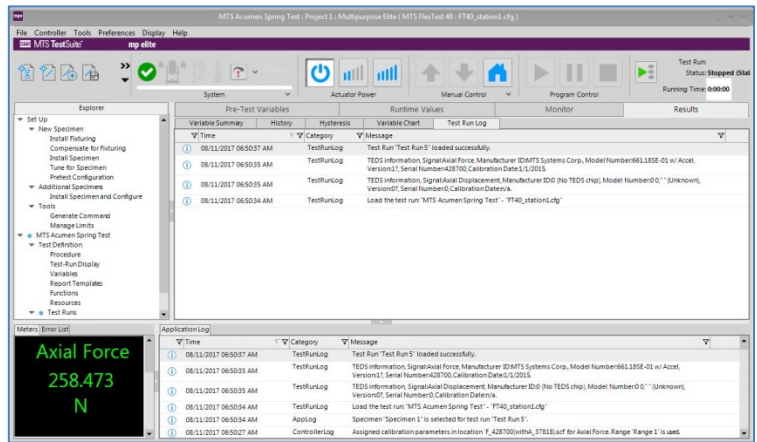
The "Recalculate All" button has a new state added to allow the user to recalculate when desired. Now the three states of the recalculate button are:

- Green: Recalculate needed
- Dark Gray: Recalculate not needed but available
- Light Gray: Recalculate not available



TEDS Information Available in the Audit Trail

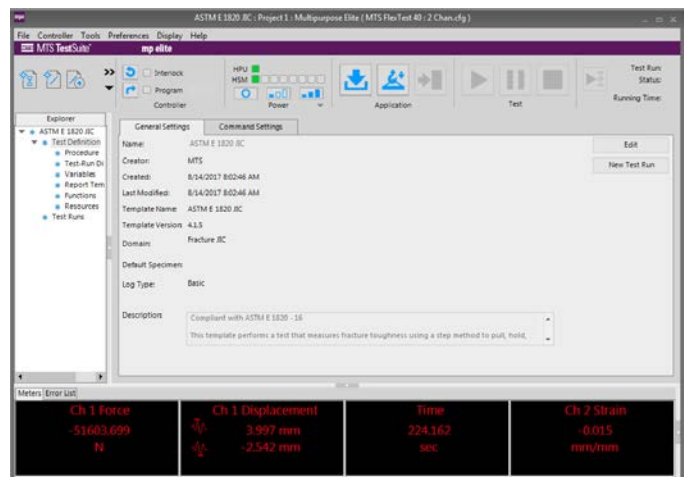
When using the Audit trail feature the data associated with TEDS-based transducers is now written to the log, providing a richer audit trail for laboratory activities.



Template Updates

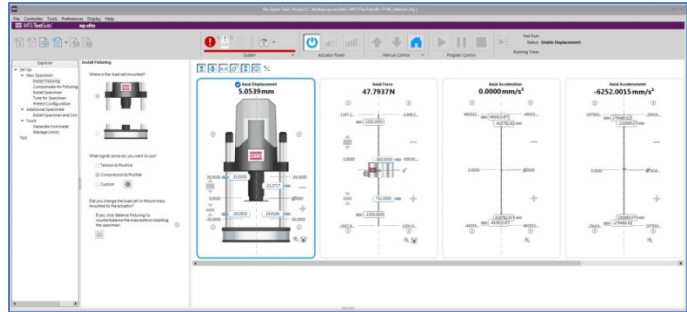
The following updates have been made to our template libraries:

- ASTM E1820 – Updates to adhere to the latest version of the standard including basing crack extension from the notch on notch height, not specimen thickness.
- ASTM E8 – Minor updates to adhere to the latest version of the standard.
- ASTM E399 – Enhanced our implementation of this standard by including support for additional variables.



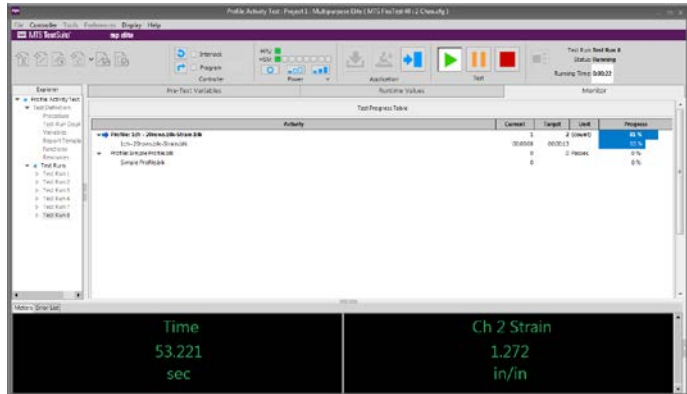
Acumen Situational Awareness Layout Improved

The situational awareness view in MP for Acumen has been improved to allow viewing of 4 transducer setups on a single screen without scrolling.



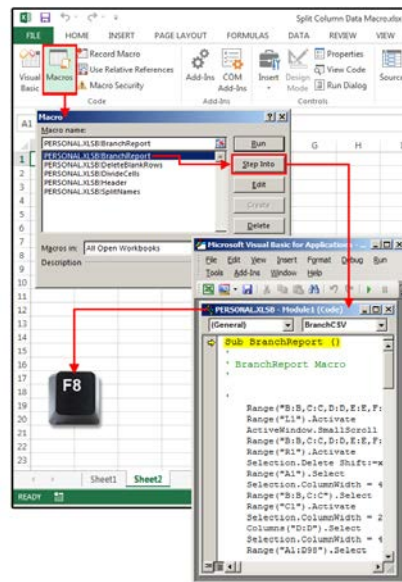
Profile Activity Updates Available on the Progress Table

The Progress Table now supports information about the progress through a given profile. Information about the % completion through the current pass of the profile is presented along with information about the % complete through the total number passes.



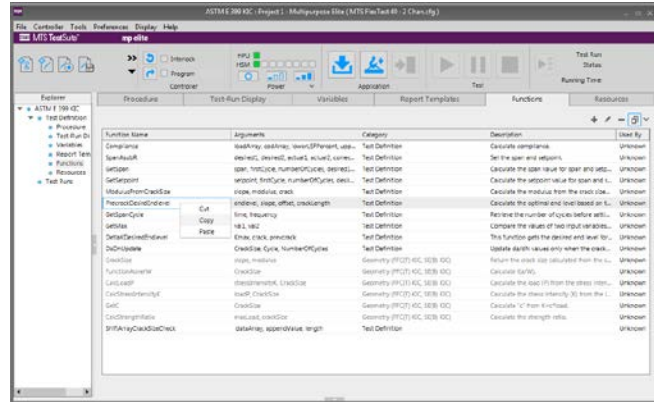
Excel Macro Support in Templates

TestSuite templates that include Excel macros are now supported within TestSuite TW. Users can now leverage the power of macros to further enhance their self-modified test templates!



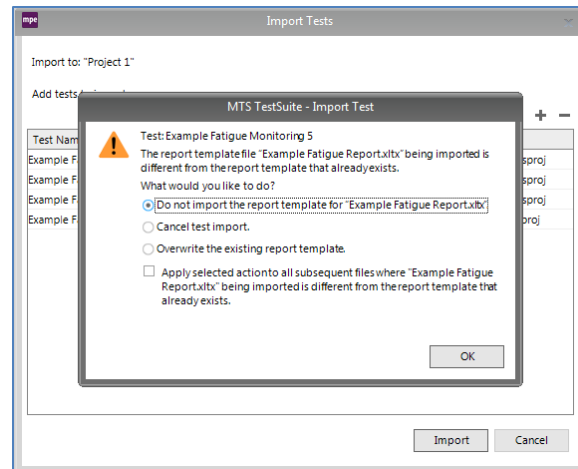
Support for Copy and Pasting Functions Between Tests

To make it easier to move functions from one test to another, we have added a menu accessible via a right-click within the Functions tab that allows the user to Cut, Copy and Paste functions.



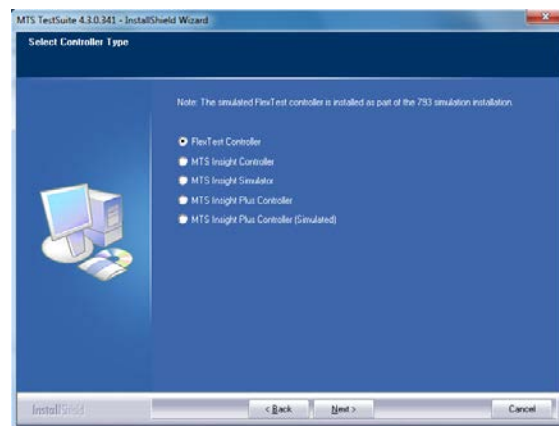
Improved Importing of Multiple Tests

TestSuite TW now provides an option that allows you to apply the selection to other tests, eliminating the need to do this for every test selected.



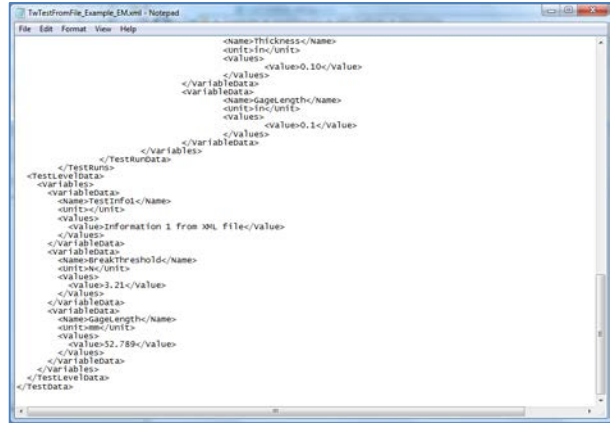
TestSuite Remembers Controller Setting

In the past when users installed a new version of TestSuite the install program would ask the user for which controller the software should be configured. If the user selected the wrong controller type, the software would no longer function until they used the SelectControllerTypeUtility to redefine the controller type. Now the installer remembers the previous setting and simply uses that for the new installation.



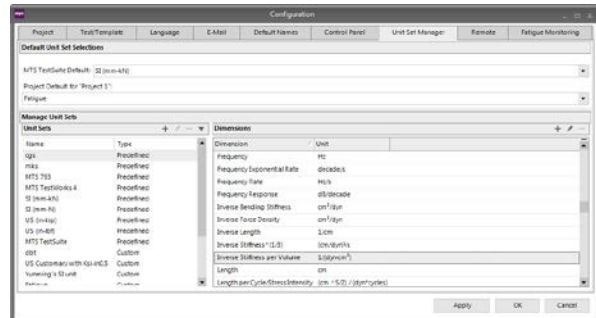
New Test from File Enhancements

TestSuite has improved its "New Test from File" function so that test-level variables can now be included and created from the external file



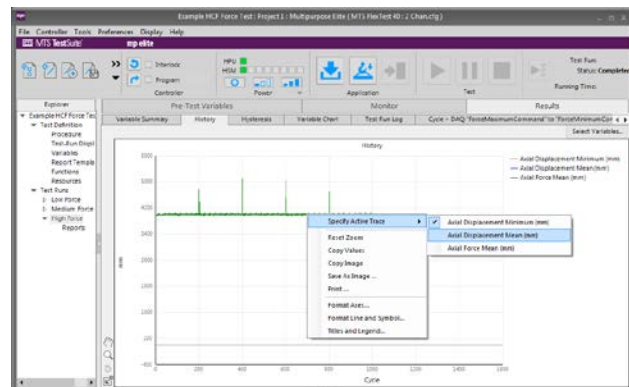
New Dimension

Inverse stiffness per volume has been added as a dimension to support moment of inertia calculations.



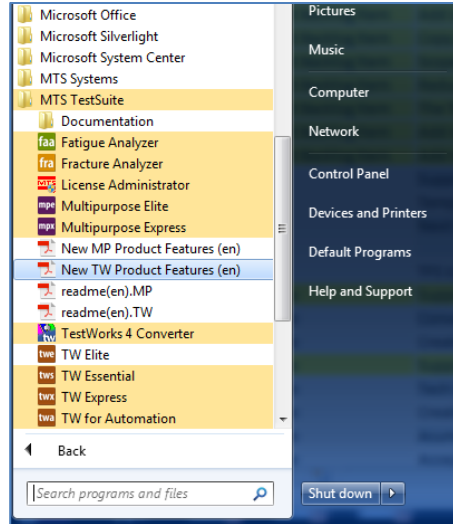
Improved Trace Selection

Functionality has been added to this release for identifying the active trace for the purposes of point picking. A new right-click option has been added to select the active trace; moving the mouse to the right arrow shows all of the traces available. This makes selecting the active trace much easier when signals are overlaid.



New Product Features Documents Available via Start Menu

The New Product Features documents are now available via the start menu making them more easily available to all users of the software.



MTS Systems Corporation

14000 Technology Drive
Eden Prairie, MN USA

www.mts.com

Tech Support: 800.328.2255

Email: Tech.Support@mts.com

MTS is a registered trademark of MTS Systems Corporation within the United States.

This trademark may be protected in other countries.