



## Accurate and Affordable Bushing Durability Testing

### System Features

- » True dynamic control
- » Up to 5 degrees of freedom:
  - Dynamic torsional and radial inputs, and static offset about the bushing axis
  - Additional static and dynamic inputs available
- » Extremely compact footprint
- » Expandable FlexTest™ GT control system
- » Optional torsional characterization
- » Optional time history playback capability

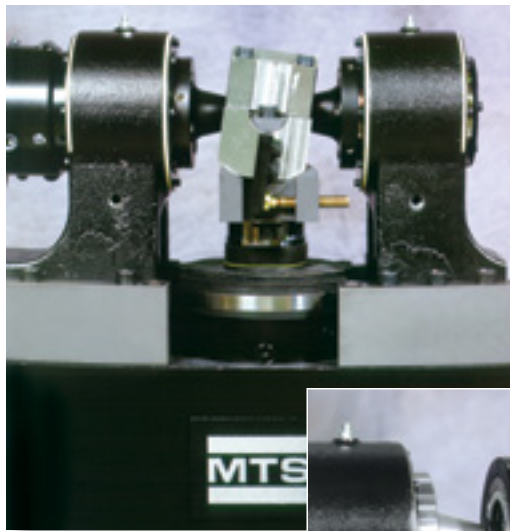
The versatile MTS Multi-Axial Bushing Durability TestStand simulates the real world service conditions of automotive bushings, and other critical vehicle suspension components, more accurately and cost-effectively than any other testing solution available. Featuring true dynamic control and up to five degrees of freedom, this highly efficient durability test system monitors component properties such as stiffness and damping throughout a testing cycle, allowing you to determine precisely when a component reaches its functional failure point – no more wasteful testing until a component fails completely.

This versatile multi-axial teststand can be configured to perform a wide variety of extended durability tests to qualify the service life of bushings and other critical vehicle suspension components. A typical system configuration includes dynamic axle torsion and radial inputs combined with a static displacement along the axle axis. A dynamic input of a conical, or cardanic, rotation about the radial axis, or a static conical input about the axis normal to radial can be added to increase the system's testing utility. The system's testing mechanism is tightly integrated to effectively minimize reaction path lengths, and its extremely compact footprint requires far less lab space than test systems of comparable functionality.

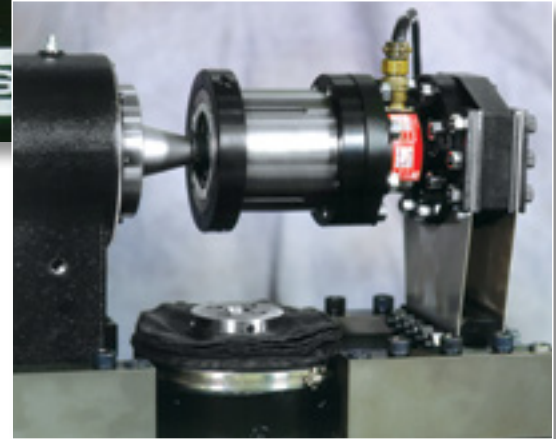
be certain.

In addition to multi-axis durability testing, this flexible teststand can be equipped with optional hardware to perform precision, single-axis torsional characterization of vehicle suspension components. Time history playback is also supported by employing world-renowned MTS RPC® (Remote Parameter Control™) software technology.

The system's powerful FlexTest™ GT control system enables direct, digital control of all dynamic system functions. Featuring multichannel and multistation capability, this flexible controller can be expanded to accommodate up to 4 bushing durability test stations and distribute test management and control to one or more personal computers.



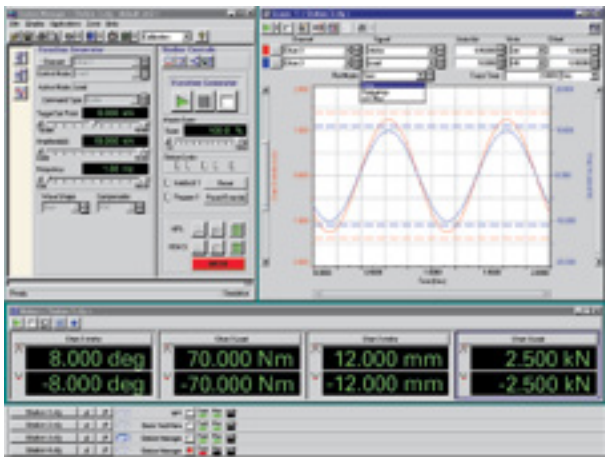
**Multi-Axis Configuration:**  
conical about normal axis-static input with optional fixture



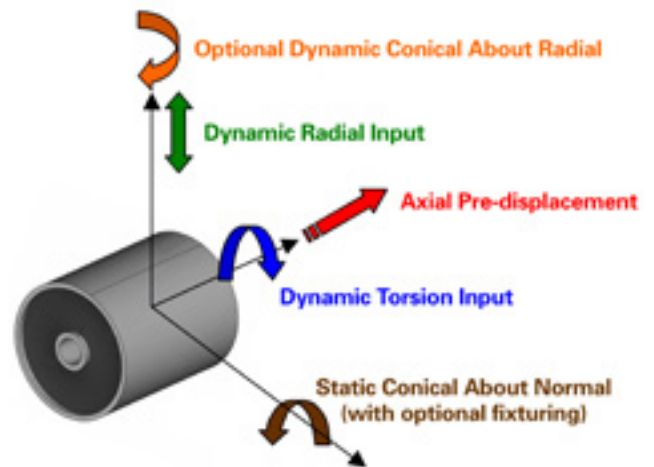
**Single-Axis Configuration:**  
torsional characterization

**Specifications**

<b>Radial Force</b>	± 50 kN
<b>Radial Displacement</b>	± 25 mm
<b>Axle Torque</b>	± 550 N-m
<b>Axle Rotation</b>	± 45°
<b>Axial pre-displacement</b>	± 10 mm



A powerful control system enables direct, digital control of all dynamic system functions.



Possible Component Inputs



**MTS Systems Corporation**  
14000 Technology Drive  
Eden Prairie, MN 55344-2290 USA  
Telephone: 1.952.937.4000  
Toll Free: 1.800.328.2255  
Fax: 1.952.937.4515  
E-mail: info@mts.com  
www.mts.com  
ISO 9001 Certified QMS

**For More Information**

Contact your local MTS sales engineer or call MTS at 1-800-328-2255 or 1-952-937-4000.

Specifications subject to change without notice.

MTS and RPC are U.S. registered trademarks and FlexTest and Remote Parameter Control are trademarks of MTS Systems Corporation. RTM No. 211177.

©2021 MTS Systems Corporation.  
100-111-293a BushingDurability • Printed in U.S.A. • 4/21