

TestLine™ Universal Struts



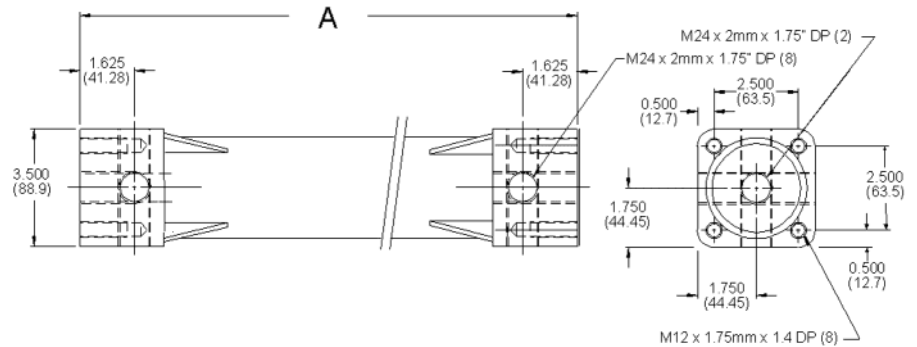
Benefits

- ▶ Proven design
- ▶ Engineered for the demands of mechanical testing
- ▶ Many attachment options are available

These universal struts are primarily used to transfer loads in the axial direction of the strut.

However, the universal ends allow other actuators or struts to be connected perpendicular to the axis of the strut for biaxial loads or motion. The biaxial loads should be applied at the end attached to the test specimen to avoid side loading actuators and other modular components.

A number of options such as rod ends, swivels, and threaded adapters are available to attach the struts to other components.



Description	Part Number	Length (A) mm (in)	* Max. Force kN (lbs.)	Weight Kg (lbs.)
Universal Strut - 375	55-204-402	375 (14.76)	50 (11,000)	10.9 (24)
Universal Strut - 875	55-204-502	875 (34.45)	50 (11,000)	15 (33)
Universal Strut - 1675	55-204-602	1675 (66)	50 (11,000)	22 (48)



Universal struts

MTS Systems Corporation
 14000 Technology Drive
 Eden Prairie, MN 55344-2290 USA
 Toll Free: 800-944-1687
 Phone: 952-937-4555
 Fax: 952-937-4515
 E-mail: info@mts.com
 www.mts.com

Specifications subject to change without notice.
 MTS is a trademark of MTS Systems Corporation.
 RTM No. 211177.
 © 2001 MTS Systems Corporation.
 100-060-778 UniStruts-01 Printed in U.S.A. 6/01