

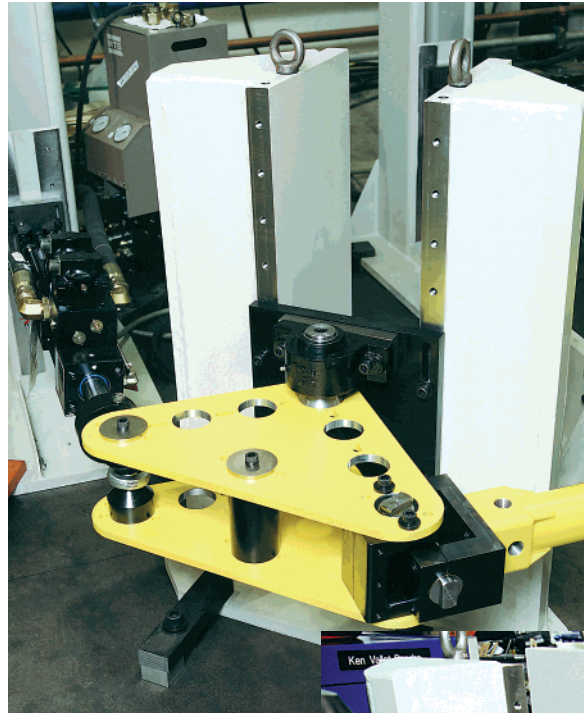
TestLine™ Reaction Stand



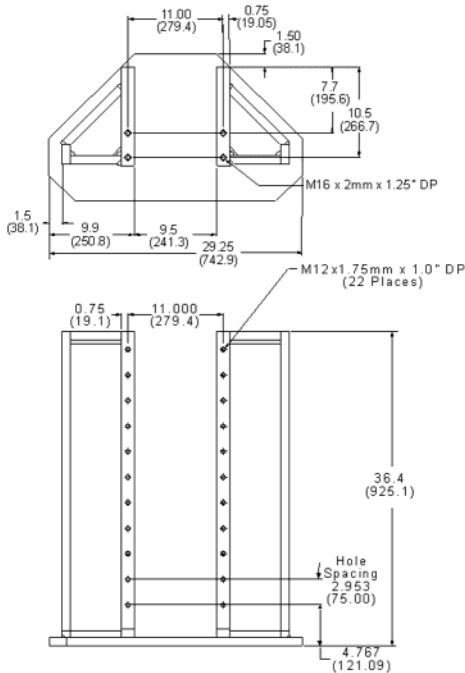
Benefits

- ▶ Proven design
- ▶ Engineered for the demands of mechanical testing
- ▶ Adds flexibility to your test setup options

The reaction stand is used to support bell cranks as well as other parts or assemblies. A series of holes in the stand along with slotted holes in the optional mounting plates and brackets provide for infinite height adjustment of the bell crank.



Reaction stands shown with a bell crank (to the left) and control arm (below).



| Description | Part Number | Max. Force Rating kN (lbs.) | Weight kN (lbs.) |
|----------------|-------------|--------------------------------|---------------------|
| Reaction Stand | 100-001-944 | 50 (11,000) | 382 (840) |

MTS Systems Corporation
 14000 Technology Drive
 Eden Prairie, MN 55344-2290 USA
 Toll Free: 800-944-1687
 Phone: 952-937-4555
 Fax: 952-937-4515
 E-mail: info@mts.com
 www.mts.com

Specifications subject to change without notice.
 MTS is a trademark of MTS Systems Corporation.
 RTM No. 211177.
 © 2001 MTS Systems Corporation.
 100-060-779 ReactStand-01 Printed in U.S.A. 6/01