

# eTIM - Electronic Test Information Management



eTIM (electronic Test Information Management) is a test information management software solution focused on the management, archiving and retrieval of test information.

eTIM uses a robust commercial relational database as a data engine to provide a complete and thorough set of data management and search functions.

eTIM provides flexible access to your critical engineering information via your laboratory LAN or your corporate WAN.

## Features and Benefits

- Designed for test information management across CAT and CAE
- Focused on management, archival and retrieval of test information
- Buffers the user from the complexities of dealing directly with a database
- Engineered for widespread information via networks
- Easy to Use – tight integration with data sources
- Managed keywords
  - Provides rich, consistent search fields
- Separate archive and database
  - Allows flexible, effective management of disk resources
- Web deployable
  - Eases IS deployment burden for large installations.
- Open design
  - Enables the creation of stand alone tools created by customers and 3rd parties.
- User security
- Flexible licensing

## eTIM Overview

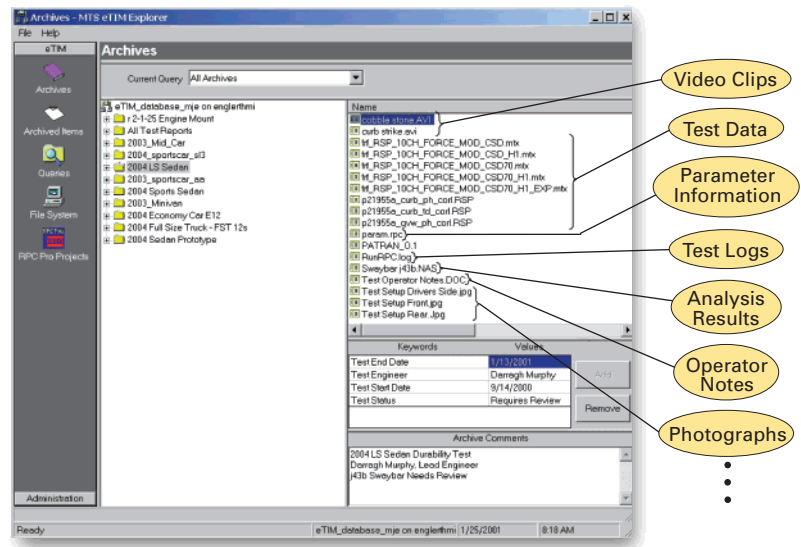
The eTIM™ Explorer, a native Windows application, is designed to be very easy to use, buffer the user from the complexities of interacting directly with a database system. eTIM software works with any data that is accessible from a Windows explorer & network. When created, additional information can be associated with the archive as required by the lab manager or eTIM administrator or as wanted by the operator.

For example, a typical project archive might include all of the test data, photographs, test logs, video clips, system configuration details, process information and analysis results, in various formats. Additional information could include test specimen details, operator information and miscellaneous notes. eTIM software provides an excellent balance between application power and ease of use that also minimizes Information Technology (IT) support requirements.

Designed to be a true client/server application, eTIM software executes many of the disk and CPU intensive tasks on the eTIM server computer, minimizing the impact on your test application. Client computers running test software, analysis applications, or general-purpose tools can access data stored within eTIM. For larger installations, multiple computers are typically configured as eTIM servers.

## Test Software Integration

eTIM software provides high levels of integration with MTS testing and simulation software. MTS RPC Pro simulation software now leverages the eTIM open design, making its data archives directly available from the RPC Pro Tool menu. This allows users to easily access archived data from where it is needed—from within the RPC Pro applications. The process of identifying the needed data, retrieving it into the current project, and loading it into the current program can occur within a single interface, saving engineers significant time.

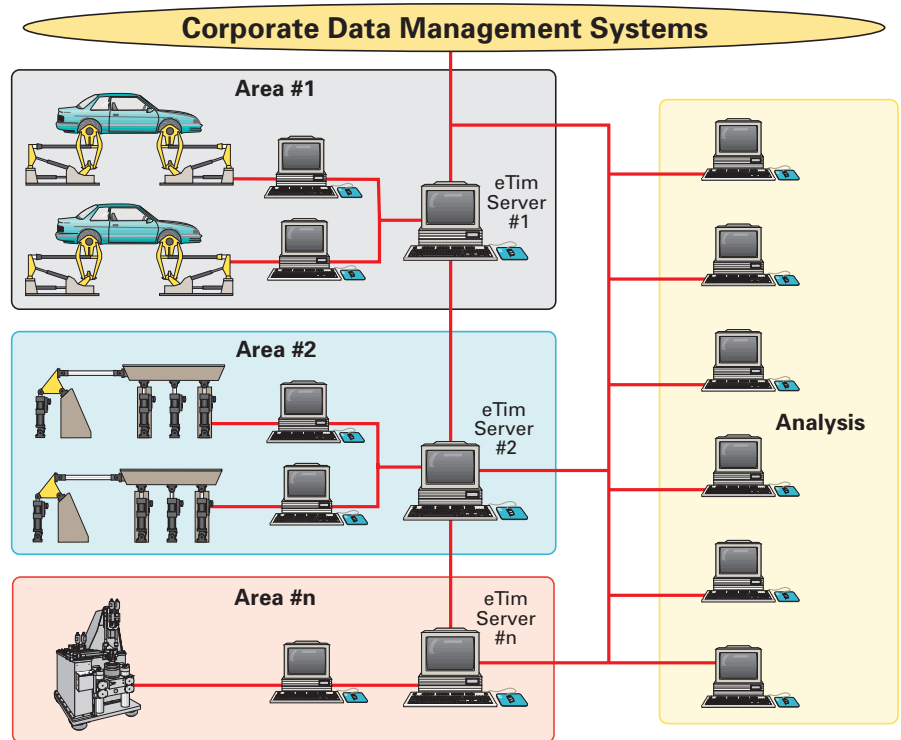


# eTIM - Electronic Test Information Management

## Product Drivers

eTIM software can be used to manage engineering and related information generated from virtually any source. In addition, MTS has developed data knowledgeable product drivers that automatically create metadata based on content found in the data files. eTIM product drivers for existing MTS software products include:

- RPC Simulation Software
- Elastomer Testing Application Software
- EDM Modeling Software
- I-DEAS Pro Noise and Vibration Software
- Adapt Powertrain Testing Software
- More under development!



## eTIM Software Options and System Requirements

Each eTIM installation needs one server and one or more client licenses.

The eTIM Server must be running Windows 2000 Server.

eTIM Client computers may be running Windows NT 4.0 or Windows 2000.

See [MTS Product Specification number 100-053-472](#) for more information.

### eTIM

(In addition to the base products, chose one or more product drivers)

#### Base Product

- eTIM Server License
- eTIM Client License

#### Product Drivers

- Opt 1** RPC Product Driver
- Opt 2** Elastomer Product Driver
- Opt 3** EDM Product Driver
- Opt 4** I-DEAS Pro Product Driver
- Opt 5** Adapt Product Driver