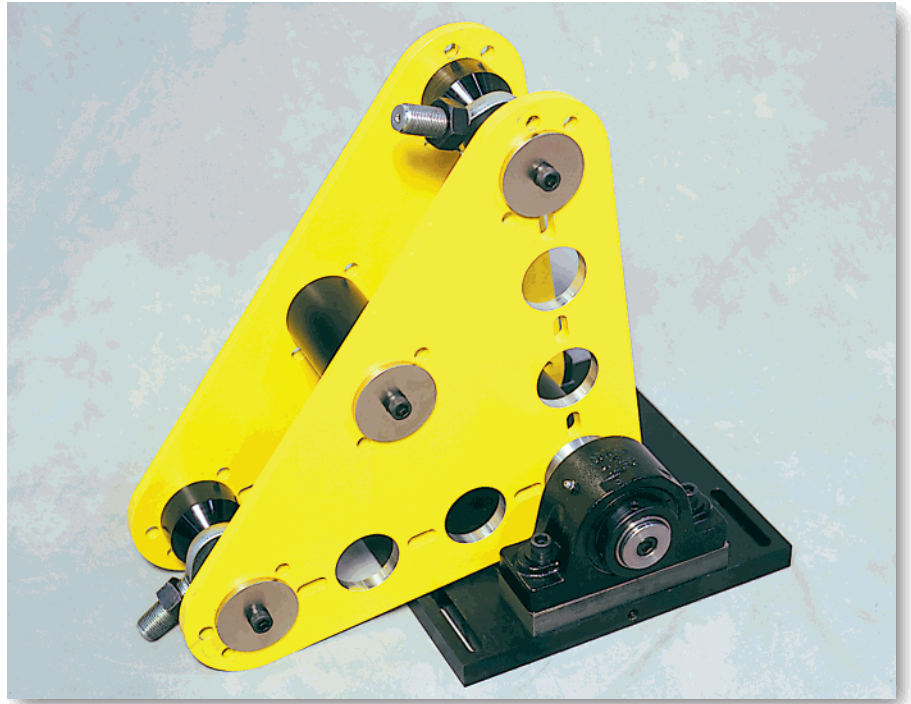


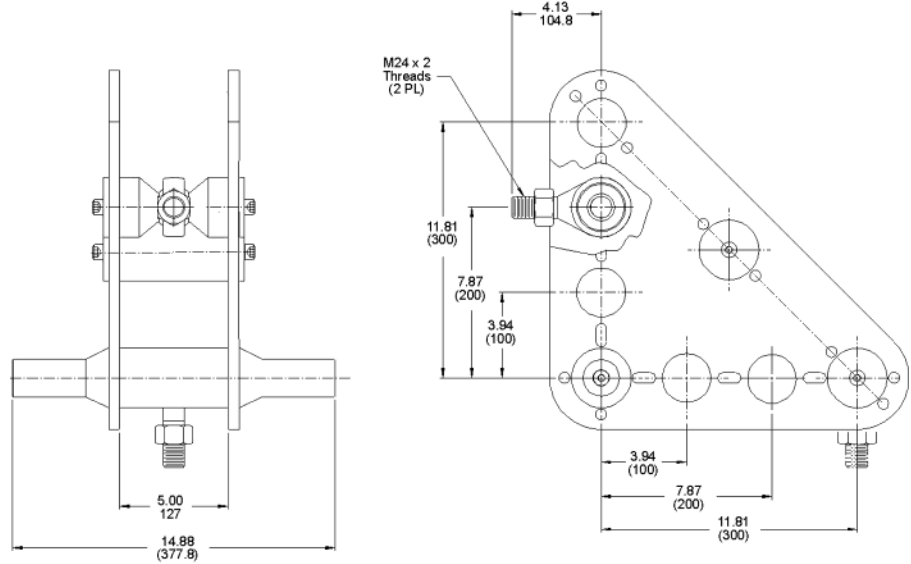
Benefits

- ▶ Proven design
- ▶ Engineered for the demands of mechanical testing
- ▶ Equipped with swivel rod ends

Bell cranks are used to gain a mechanical advantage, react horizontal forces into a bed plate or floor, and isolate an actuator from moments and side loads. The bell crank assembly comes complete with two swivel rod ends and two pillow block bearings with 25 mm (1 inch) spacers for mounting. The optional mounting plate (100-056-342) shown is used to attach the bell crank to the reaction stand (100-001-944).



Bell crank assembly (100-056-345) shown with optional mounting plate.



Description	Part Number	* Max. Force kN (lbs.)	Weight Kg (lbs.)
Bell Crank Assembly. Includes (2) pillow block bearings (100-001-207) and 25mm spacers (100-010-229)	100-056-345	50 (11,000)	36 (80)

* When a bell crank is used to gain a mechanical advantage the increased force achieved should not exceed the maximum load rating specified.

MTS Systems Corporation
 14000 Technology Drive
 Eden Prairie, MN 55344-2290 USA
 Toll Free: 800-944-1687
 Phone: 952-937-4555
 Fax: 952-937-4515
 E-mail: info@mts.com
 www.mts.com

Specifications subject to change without notice.
 MTS is a trademark of MTS Systems Corporation.
 RTM No. 211177.
 © 2001 MTS Systems Corporation.
 100-060-775 BellCrank-01 Printed in U.S.A. 6/01