



## 100/200 and 2000 N Advantage™ Pneumatic Grips

Lightweight grips designed for low-force applications

### Features

#### LIGHTWEIGHT DESIGN

- » Perform tests with your low- capacity load cell without worrying about your fixture weight taking up too much of your load cell capacity.

#### DUAL ACTING GRIP FACES

- » The grip faces simultaneously move to the center line of the grip, assuring correct alignment and removing the bending strains on your specimen that can invalidate your tests.

#### LARGE AREA ABOVE FACES

- » Designed with a large enough area above the faces for you to hold your specimens with your fingers during loading.

#### INTEGRATED CLAMP/RELEASE SWITCH

- » Some customers prefer to use a clamp/release footswitch, some customers prefer more local operation. This product accommodated both. The integrated clamp/release switch is located close to the specimen for intuitive inspection. Also allows you to purchase a less expensive grip supply.

Designed for testing a wide variety of materials, including elastomers, thin sheets, films, and tapes, these lightweight grips will let you perform tests with your low-capacity load cell without worrying about your fixture weight taking up too much of your load cell capacity.

Both low- and medium-capacity models feature dual-acting grip faces that simultaneously move to the center line of the grip. This assures correct specimen alignment and removes the bending strains that can invalidate your test results.

These grips use standard pin connectors for both electromechanical and servohydraulic test systems. The design of these grips also lets you load and align your specimens quickly and easily. The grips include an area above the grip faces that is large enough for you to load the specimens while holding them with your fingers.

Both models require an air grip controller for operation. The air controller and faces must be purchased separately. Faces can be ordered with flat, corrugated, serrated, diamond and rubber surfaces.

be certain.

## Also Required

### PNEUMATIC CONTROL

- » Both models require an air grip supply to provide dry, filtered air and an air grip controller for operation. This control features a foot operated switch which lets you control the grips and keep both hands free for specimen alignment. An air pressure of 0.6 MPa/80 psi is required.

### ADAPTERS

- » The 100/200 N grips require a Type C (5/8 in.) adapter for the upper grip and a Type D (1 1/4 in.) adapter for the lower grip. The 2000 N grips require a Type D (1 1/4 in.) adapter for both the upper and lower grips.

Capacity	Dimensions		Temperature Rating	Clamping Force	Upper Grip Weight	Maximum Specimen Thickness	Part Number
	Width	Height					
200 N (40 lbs.)	114 mm (4.5 in)	203 mm (8.0 in)	-40°C to 200°C (-40°F to 400°F)	620 N (140 lbf)	1.0 kg 2 lbs	10 mm (0.39 in)	100-036-576
2 kN (400 lbs.)	147 mm (5.8 in)	227 mm (8.9 in)	-40°C to 200°C (-40°F to 400°F)	7100 N (1600 lbf)	2.7 kg (6 lbs)	12 mm (0.47 in)	100-280-342

### Options (choice of faces)

Faces are available with surfaces designed to test a variety of materials.

#### CORRUGATED

- » For smooth specimens (textile, fabrics, tissue, leather)

#### SERRATED

- » For gripping soft materials without causing failure (paper, board, aluminum, copper and steel wire, soft steels)

#### RUBBER COATED

- » To offer extra protection for your thin specimens (films, fibers, aluminum foil)

#### DIAMOND TIPPED

- » To provide you with an aggressive surface for gripping soft materials (soft steels, rigid plastic, wood)

#### GRAB TEST

- » According to international standards, including ASTM D2208 (leather), D5034 (fabrics), D1683 (woven fabrics) and ISO 5082 (fabrics)

#### LINE CONTACT

- » Faces are for rubber, latex and cable sheath

#### FLAT

- » For zippers and soft foods, such as chewing gum and dough

Face Surface	Dimensions	Part Number
Rubber (smooth)*	12.5 mm x 25 mm (0.5 in x 1 in)	056-163-825
Smooth	25 mm x 25 mm (1 in x 1 in)	056-163-801
Corrugated	25 mm x 25 mm (1 in x 1 in)	056-163-802
Serrated	25 mm x 25 mm (1 in x 1 in)	056-163-803
Diamond Tip	25 mm x 25 mm (1 in x 1 in)	056-163-804
Rubber (matte)*	25 mm x 25 mm (1 in x 1 in)	056-163-805
Rubber (corrugated)*	25 mm x 25 mm (1 in x 1 in)	056-163-806
Rubber (smooth)*	25 mm x 25 mm (1 in x 1 in)	056-163-807
Line Contact (r=4.75 mm)	25 mm x 25 mm (1 in x 1 in)	056-163-808
Line Contact w/Rubber Opposite* (r=4.75 mm)	25 mm x 25 mm (1 in x 1 in)	056-163-826
Line Contact w/Rubber Opposite* (r=2.5 mm)	25 mm x 25 mm (1 in x 1 in)	056-163-829
Smooth	25 mm x 75 mm (1 in x 2.6 in)	056-163-809
Corrugated	25 mm x 75 mm (1 in x 2.6 in)	056-163-810
Serrated	25 mm x 75 mm (1 in x 2.6 in)	056-163-811
Diamond Tip	25 mm x 75 mm (1 in x 2.6 in)	056-163-812
Rubber (matte)*	25 mm x 75 mm (1 in x 2.6 in)	056-163-813
Rubber (corrugated)*	25 mm x 75 mm (1 in x 2.6 in)	056-163-814
Rubber (smooth)*	25 mm x 75 mm (1 in x 2.6 in)	056-163-815
Diamond	25 mm x 150 mm (1 in x 5.9 in)	056-163-828
Rubber*	25 mm x 150 mm (1 in x 5.9 in)	056-163-830
Smooth	38 mm x 58 mm (1.5 in x 2.3 in)	056-163-816
Corrugated	38 mm x 58 mm (1.5 in x 2.3 in)	056-163-817
Serrated	38 mm x 58 mm (1.5 in x 2.3 in)	056-163-818
Diamond Tip	38 mm x 58 mm (1.5 in x 2.3 in)	056-163-819
Rubber (matte)*	38 mm x 58 mm (1.5 in x 2.3 in)	056-163-820
Rubber (corrugated)*	38 mm x 58 mm (1.5 in x 2.3 in)	056-163-821
Rubber (smooth-EPDM)*	38 mm x 58 mm (1.5 in x 2.3 in)	056-163-822
Line Contact (r=4.75 mm)	38 mm x 58 mm (1.5 in x 2.3 in)	056-163-823
Line Contact w/Rubber Opposite* (r=4.75 mm)	38 mm x 58 mm (1.5 in x 2.3 in)	056-163-827
Grab Test	38 mm x 58 mm (1.5 in x 2.3 in)	056-163-824

\* Rubber grip faces are for use only at room temperature.



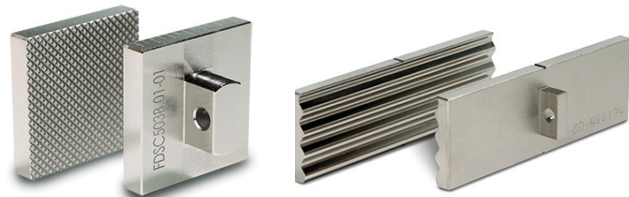
### MTS Systems Corporation

14000 Technology Drive  
Eden Prairie, MN 55344-2290 USA

Telephone: 1.952.937.4000  
Toll Free: 1.800.328.2255  
Fax: 1.952.937.4515

E-mail: info@mts.com  
www.mts.com

ISO 9001 Certified QMS



Specifications subject to change without notice.

MTS is a registered trademark and Advantage is a trademark of MTS Systems Corporation. RTM No. 211177.

© 2018 MTS Systems Corporation.  
100-470-317 Advantage Pneumatic Grips Printed in U.S.A. 12/18